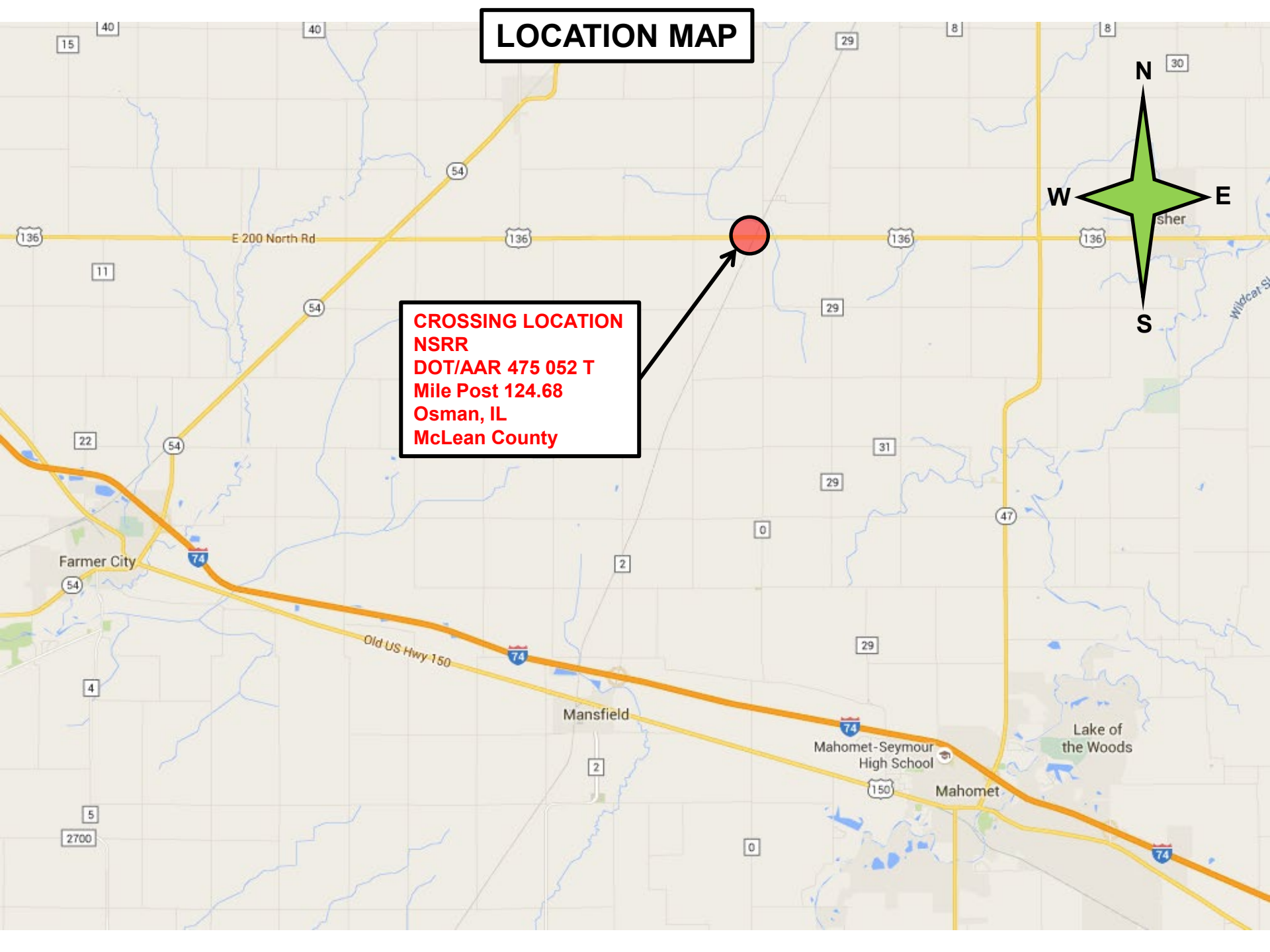


LOCATION MAP



**CROSSING LOCATION
NSRR
DOT/AAR 475 052 T
Mile Post 124.68
Osman, IL
McLean County**



DETOUR ROUTE



**DETOUR ROUTE
PAGE 6**

CROSSING LOCATION

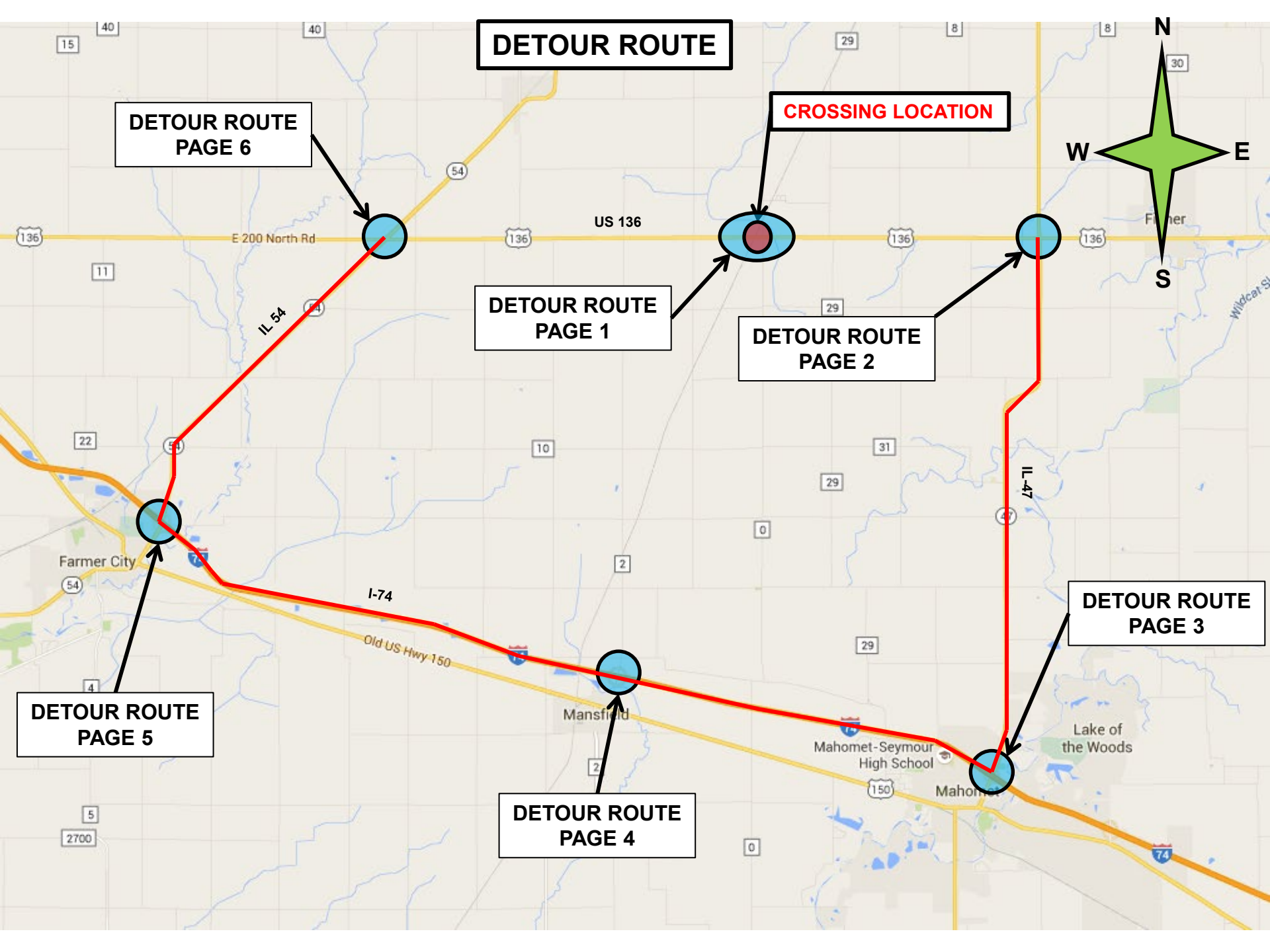
**DETOUR ROUTE
PAGE 1**

**DETOUR ROUTE
PAGE 2**

**DETOUR ROUTE
PAGE 3**

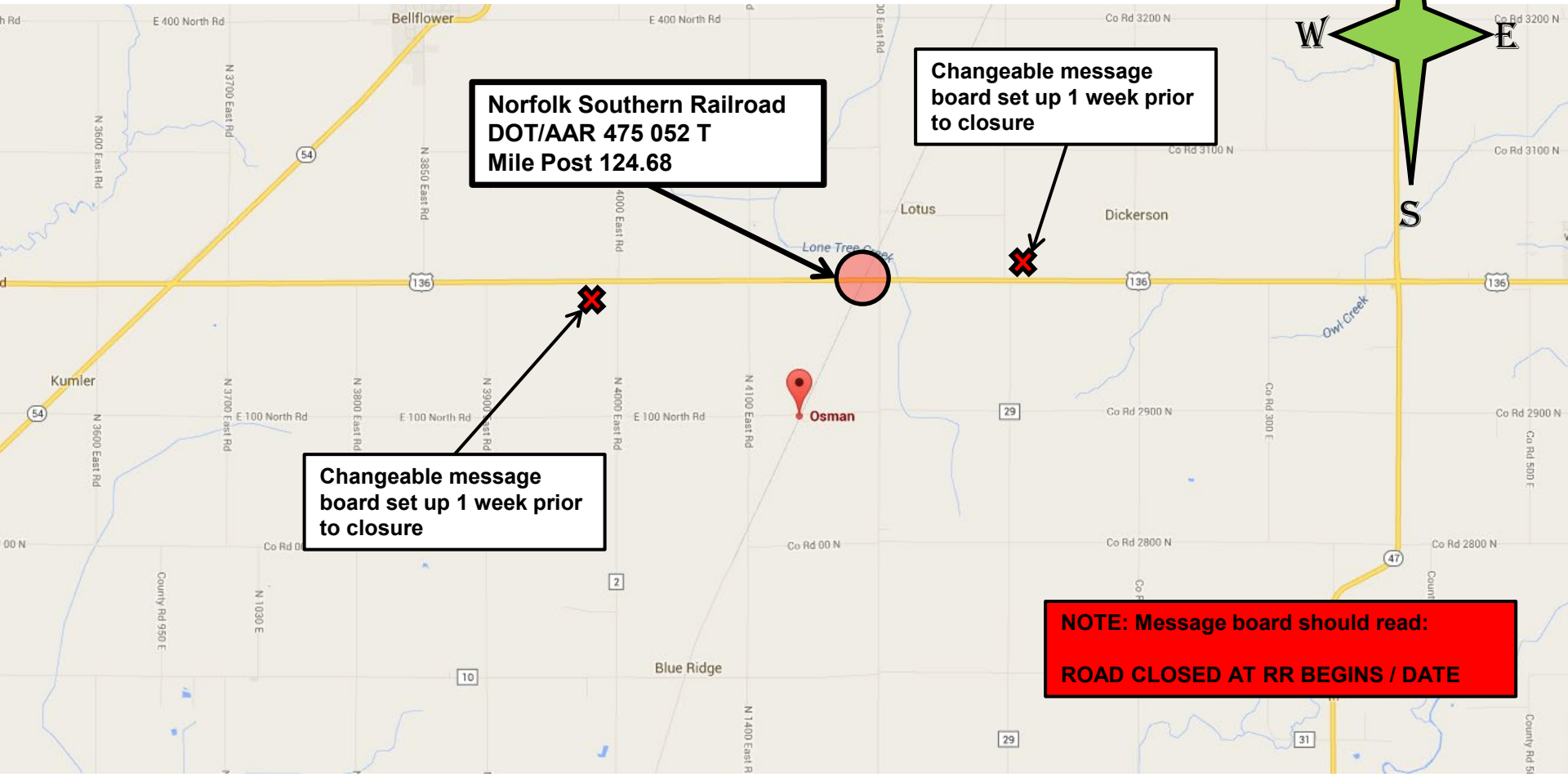
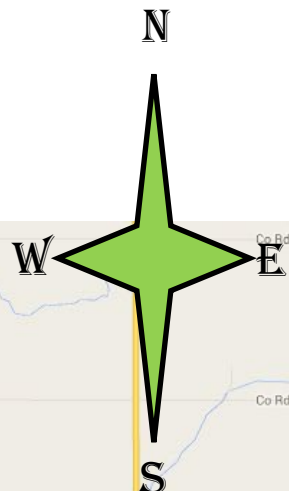
**DETOUR ROUTE
PAGE 5**

**DETOUR ROUTE
PAGE 4**



Note: All traffic control devices require lights per the Standard Specifications for Road and Bridge Construction

CHANGEABLE MESSAGE SIGNS



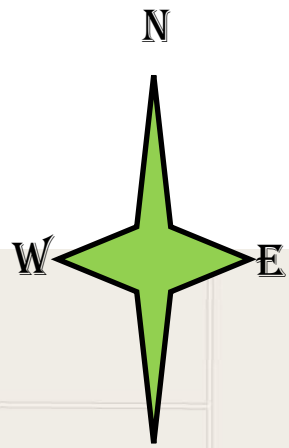
**Norfolk Southern Railroad
DOT/AAR 475 052 T
Mile Post 124.68**

Changeable message board set up 1 week prior to closure

Changeable message board set up 1 week prior to closure

**NOTE: Message board should read:
ROAD CLOSED AT RR BEGINS / DATE**

**DETOUR ROUTE
PAGE 1**



**Staggered Type 3 w/lights
barricades w/ ROAD
CLOSED to Through
Traffic**

BARRICADE AHEAD Sign

ROAD CLOSED AHEAD Sign

**Type 3 barricades w/
lights and ROAD
CLOSED sign**

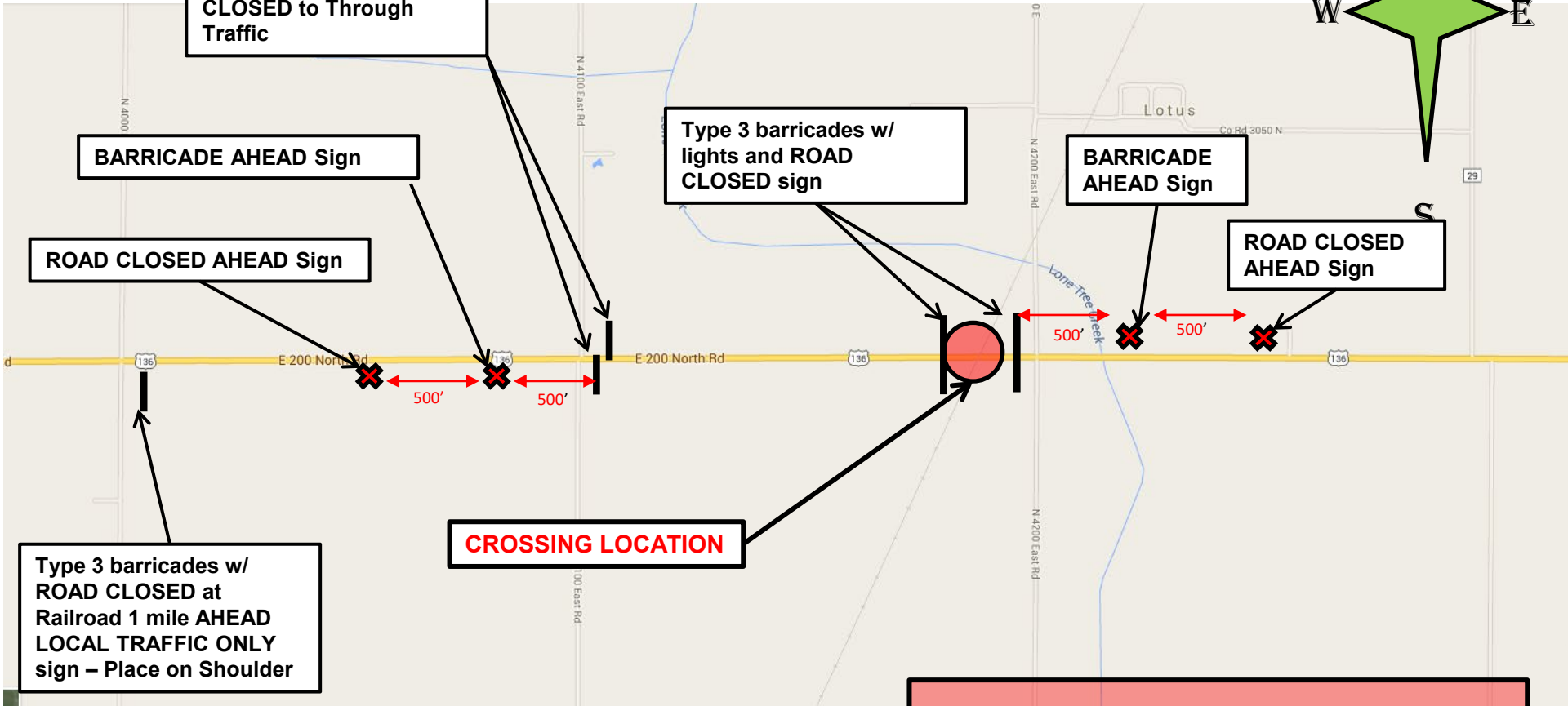
**BARRICADE
AHEAD Sign**

**ROAD CLOSED
AHEAD Sign**

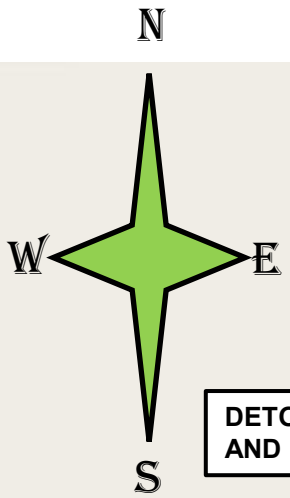
CROSSING LOCATION

**Type 3 barricades w/
ROAD CLOSED at
Railroad 1 mile AHEAD
LOCAL TRAFFIC ONLY
sign – Place on Shoulder**

NOTE:
Traffic control shall be in accordance with the latest versions of the MUTCD, Standard Specifications for Road & Bridge Construction, Supplemental Specifications & Recurring Special Provisions, applicable Highway Standards & District Details



**DETOUR ROUTE
PAGE 2**



**ROAD CLOSED AHEAD
WITH RIGHT PRE-TURN
ARROW**

DETOUR AHEAD

**DETOUR (US-136 WEST SHIELD)
AND UP Arrow**

**Type 3 barricades w/ ROAD CLOSED
at Railroad 4 mile AHEAD LOCAL
TRAFFIC ONLY sign – Place on
Shoulder**

**DETOUR (US-136 WEST SHIELD)
and LEFT Arrow Sign**

**DETOUR (US-136 WEST SHIELD)
PRE-TURN LEFT Arrow**

**DETOUR AHEAD
Sign**

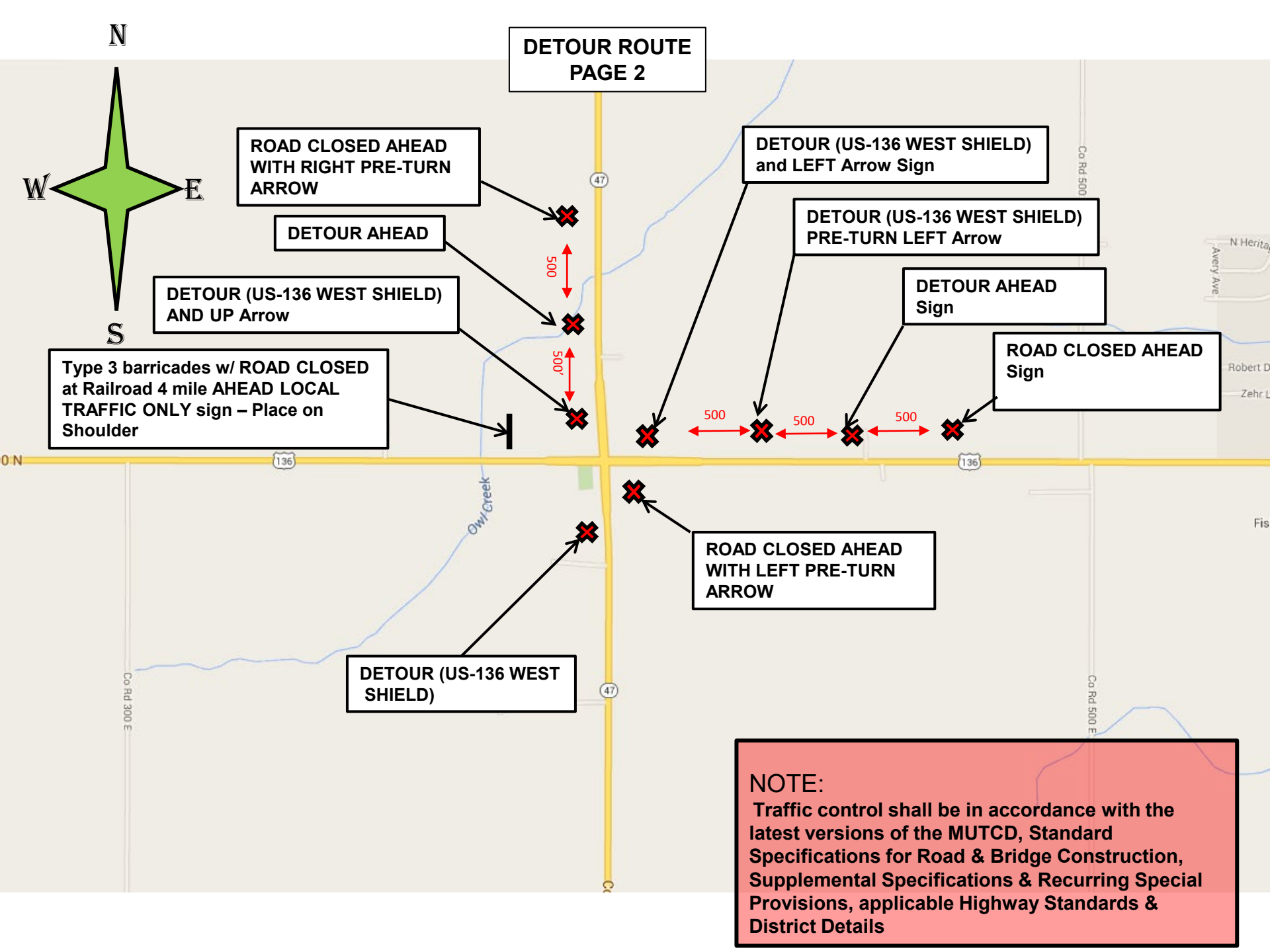
**ROAD CLOSED AHEAD
Sign**

500 500 500

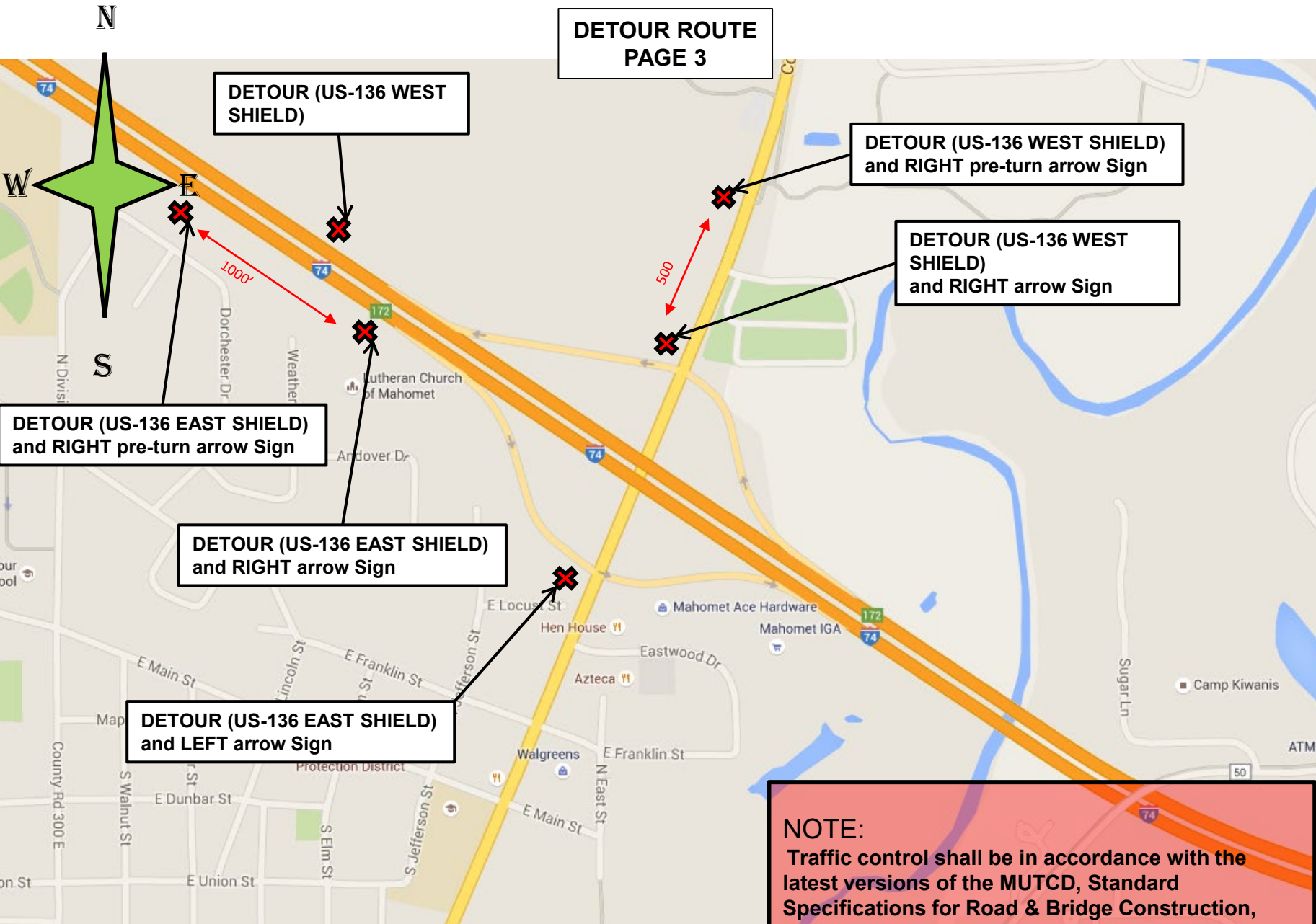
**ROAD CLOSED AHEAD
WITH LEFT PRE-TURN
ARROW**

**DETOUR (US-136 WEST
SHIELD)**

NOTE:
Traffic control shall be in accordance with the latest versions of the MUTCD, Standard Specifications for Road & Bridge Construction, Supplemental Specifications & Recurring Special Provisions, applicable Highway Standards & District Details



**DETOUR ROUTE
PAGE 3**



DETOUR (US-136 WEST SHIELD)

DETOUR (US-136 WEST SHIELD) and RIGHT pre-turn arrow Sign

DETOUR (US-136 WEST SHIELD) and RIGHT arrow Sign

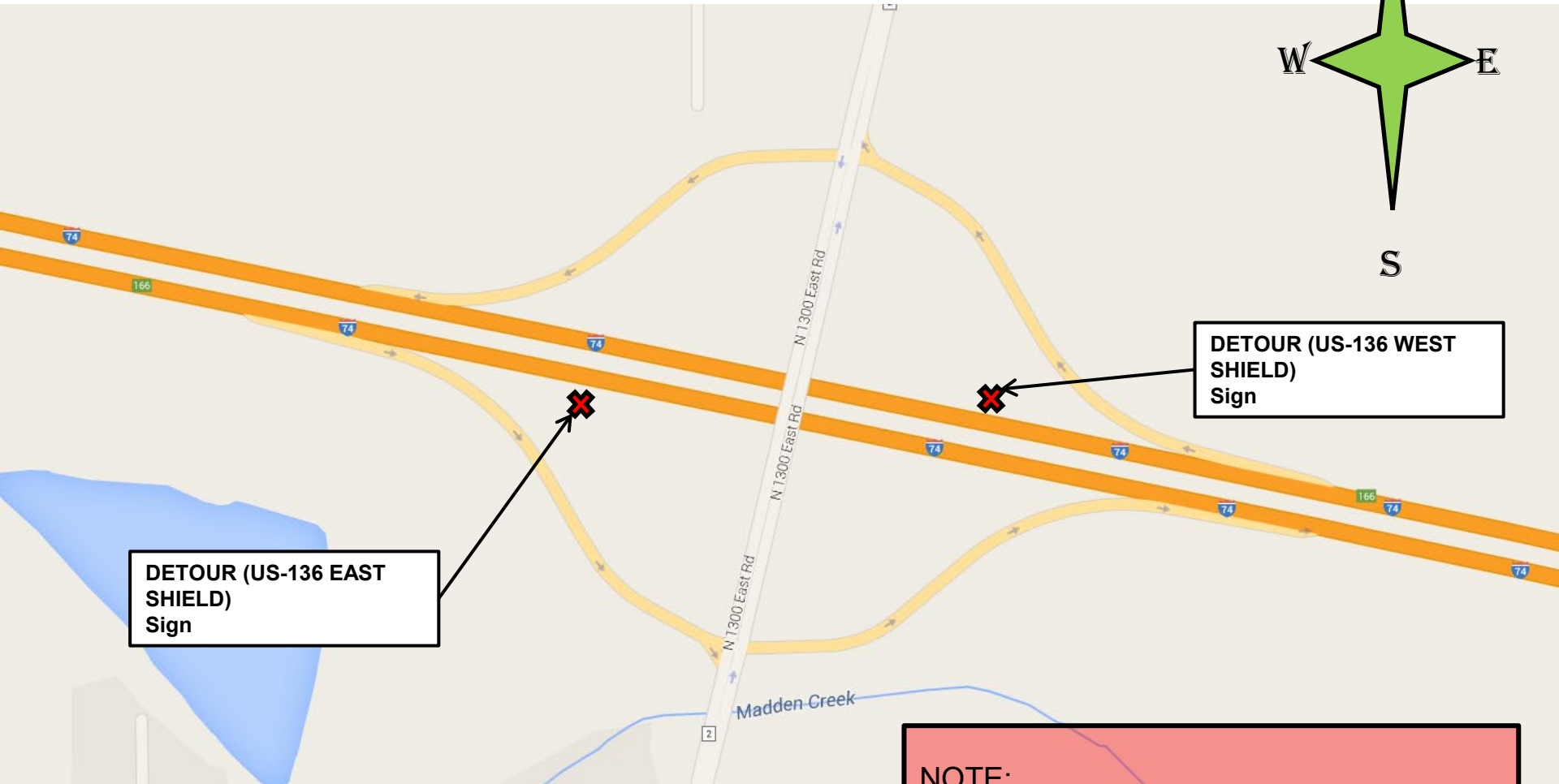
DETOUR (US-136 EAST SHIELD) and RIGHT pre-turn arrow Sign

DETOUR (US-136 EAST SHIELD) and RIGHT arrow Sign

DETOUR (US-136 EAST SHIELD) and LEFT arrow Sign

NOTE:
Traffic control shall be in accordance with the latest versions of the MUTCD, Standard Specifications for Road & Bridge Construction, Supplemental Specifications & Recurring Special Provisions, applicable Highway Standards & District Details

**DETOUR ROUTE
PAGE 4**

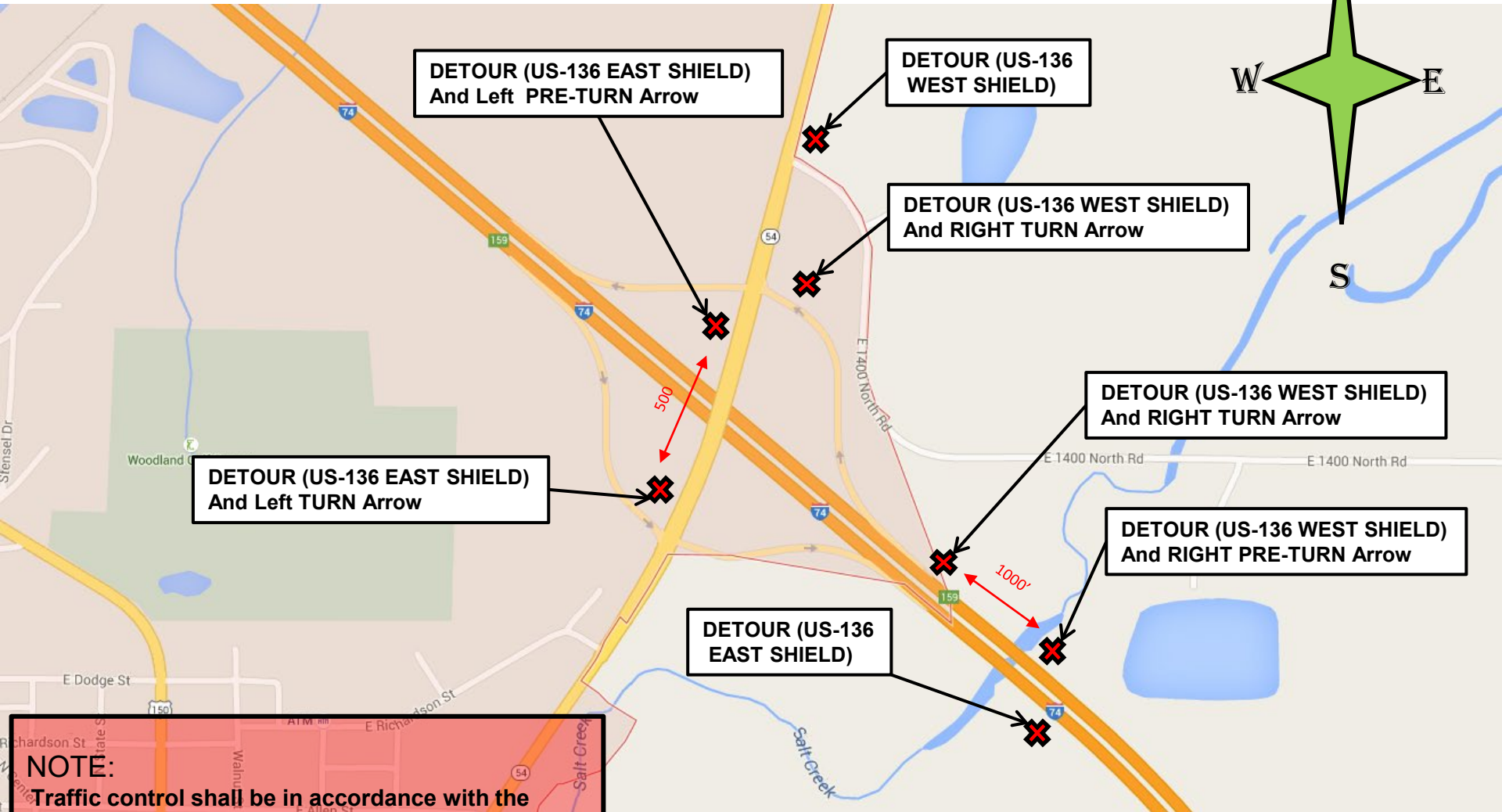


DETOUR (US-136 EAST SHIELD) Sign

DETOUR (US-136 WEST SHIELD) Sign

NOTE:
Traffic control shall be in accordance with the latest versions of the MUTCD, Standard Specifications for Road & Bridge Construction, Supplemental Specifications & Recurring Special Provisions, applicable Highway Standards & District Details

**DETOUR ROUTE
PAGE 5**



**DETOUR (US-136 EAST SHIELD)
And Left TURN Arrow**

**DETOUR (US-136 EAST SHIELD)
And Left PRE-TURN Arrow**

**DETOUR (US-136 WEST SHIELD)
And RIGHT TURN Arrow**

**DETOUR (US-136 WEST SHIELD)
And RIGHT TURN Arrow**

**DETOUR (US-136 WEST SHIELD)
And RIGHT TURN Arrow**

**DETOUR (US-136 WEST SHIELD)
And RIGHT PRE-TURN Arrow**

**DETOUR (US-136
EAST SHIELD)**

NOTE:
Traffic control shall be in accordance with the latest versions of the MUTCD, Standard Specifications for Road & Bridge Construction, Supplemental Specifications & Recurring Special Provisions, applicable Highway Standards & District Details

